

Centro 1 Assembly Instructions



1

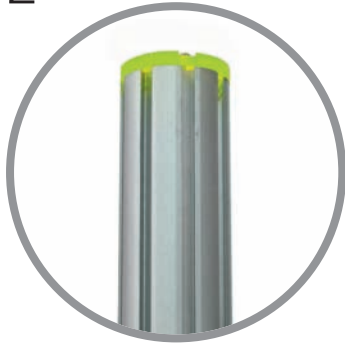


Stand base on the ground.
Loosen grub screws and slide
both connector bars half way
out of groove and retighten.
Repeat for other base post.

Note: Base plates
pre-assembled on kits
supplied in carry bag only.

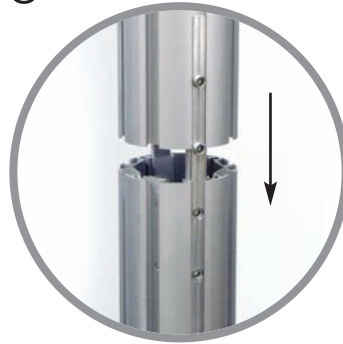


2



The upper 8-way post end cap has two notches which should align with the connector bar grooves shown in stage 1.

3



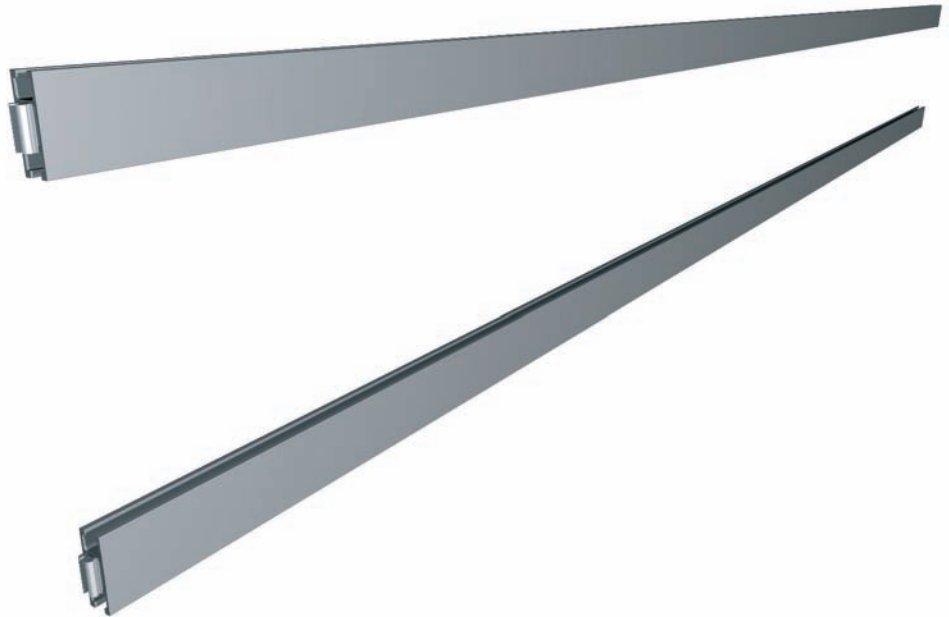
Join posts and tighten the grub screws to make assembly secure. Repeat for other base posts.



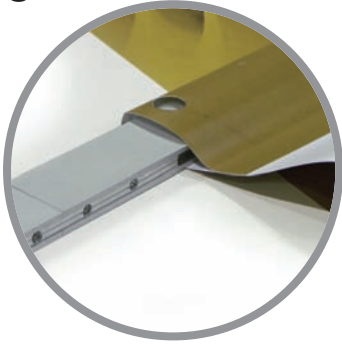
4



Assemble the horizontal rails in the same manner as the posts by loosening connector bars, sliding in between rails and retightening.



5



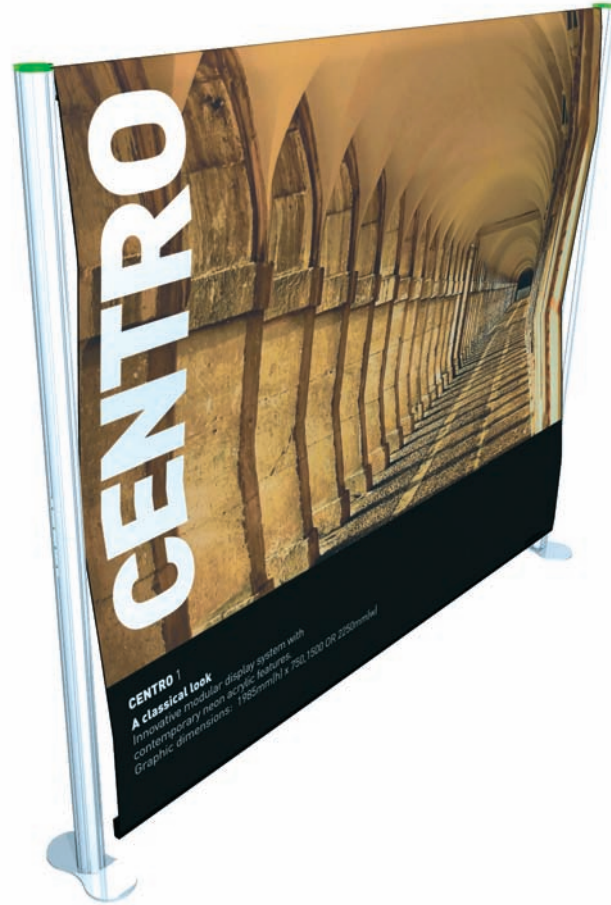
Slide one set of horizontals into the top pocket of the graphic ensuring that the connector bars are on the underside of the profiles.



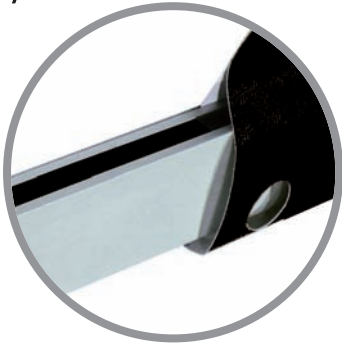
6



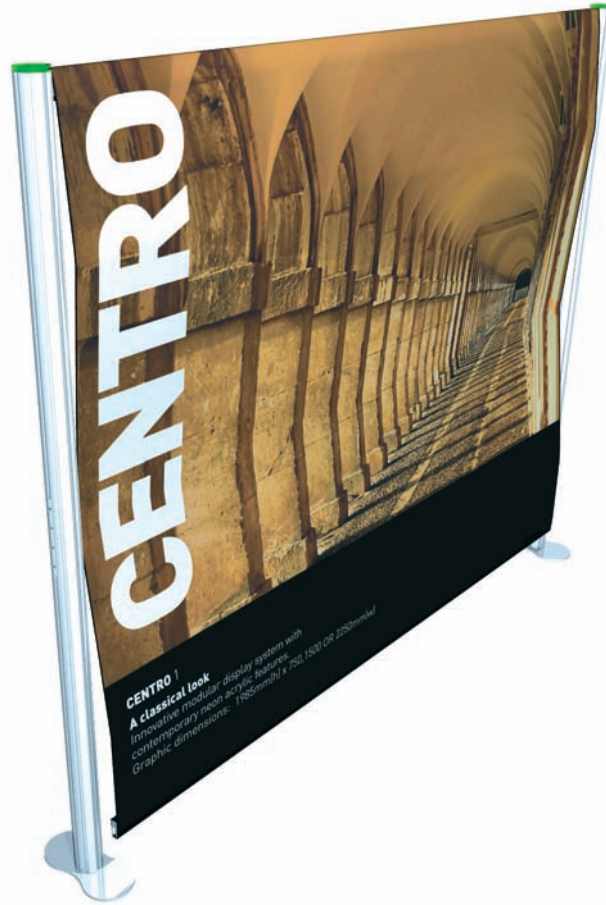
Connect the top horizontal rail to the two posts and tighten grub screws to secure in place.



7



Slide the other set of horizontals into the bottom pocket of the graphic ensuring that the connector bars are on the underside of the profiles.



8



Tension graphic by pulling down the bottom horizontal rail and secure to both posts by tightening grub screws.

