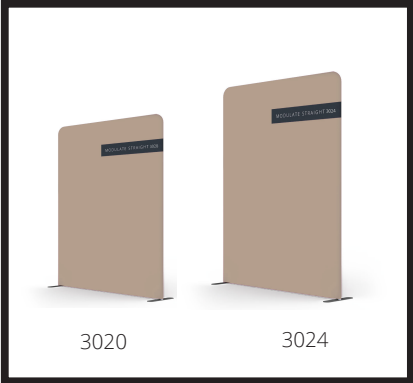


Modulate Straight Frames

Modulate 3020 and 3024 (Straight)

April 2024



PARTS (NOT TO SCALE)

3020 Straight

Vertical Poles

Vertical Centre Poles

Horizontal Support Poles

Bottom Horizontal Poles

Top Horizontal Poles

Vertical Centre Pole

Radius Top Corner Sections

Feet

Gloves

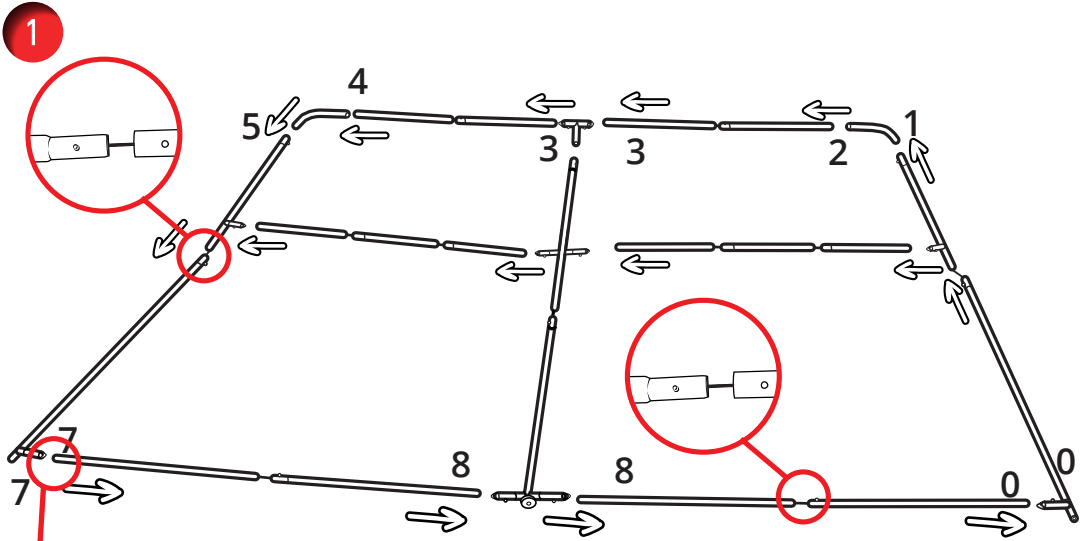
Optional Half Feet

Optional Straight corner

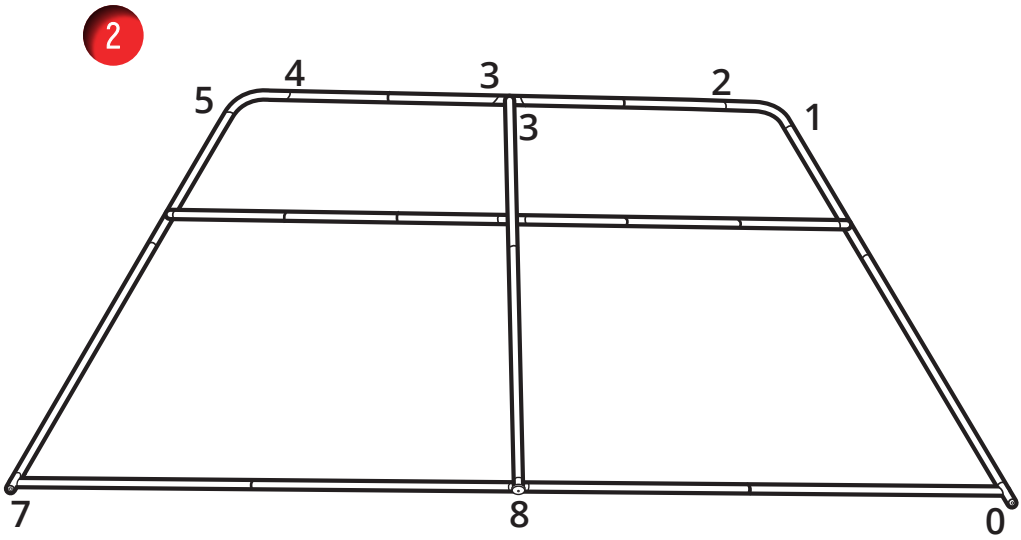
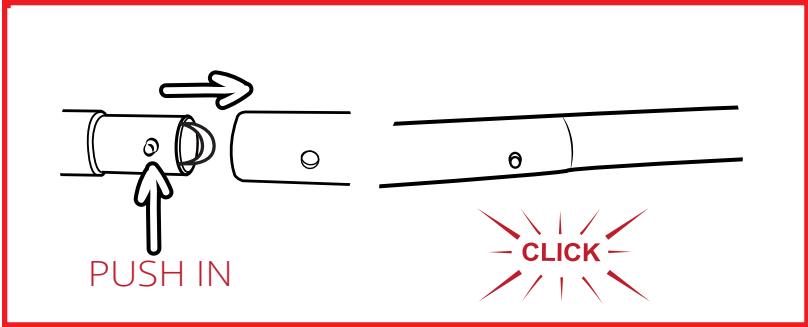
NOT SUPPLIED WITH KIT AND THEY ARE SOLD SEPARATELY

3024 Straight

Optional Extension poles (x3)



Complete the assembly with the upper horizontal sections to make it easier to fit the internal horizontal support poles.



Modulate Straight Frames

Modulate 3020 and 3024 (Straight)

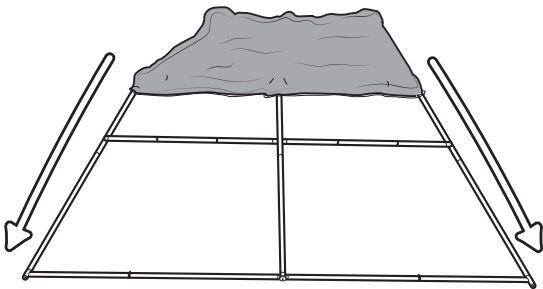
April 2024



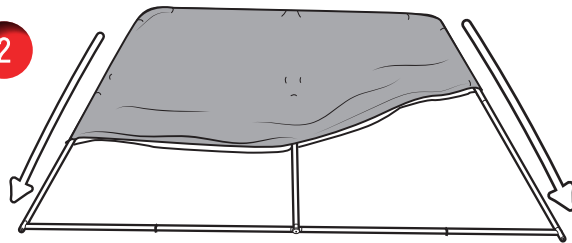
x1



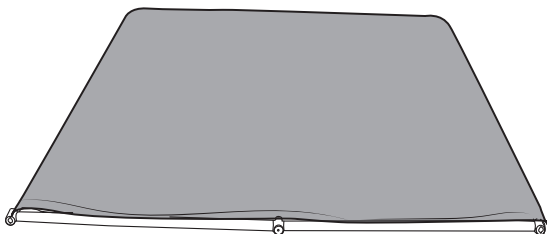
1



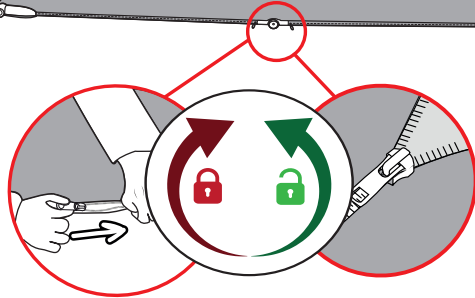
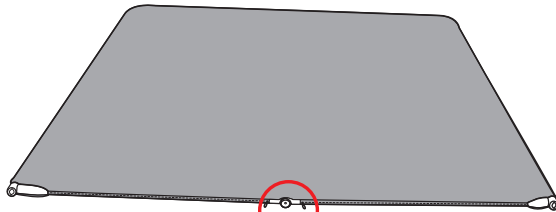
2



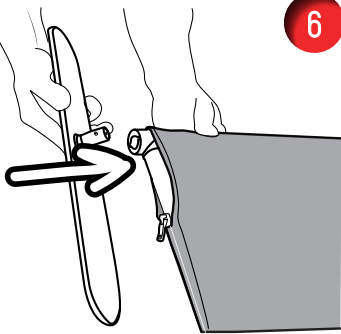
3



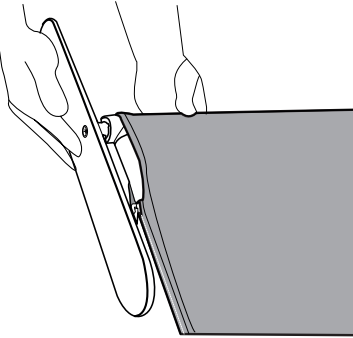
4



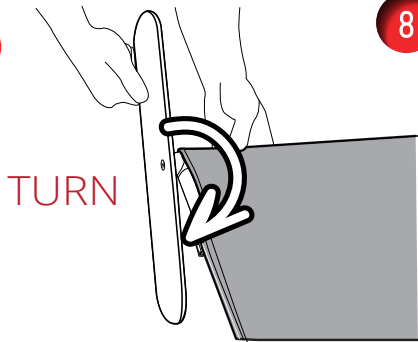
5



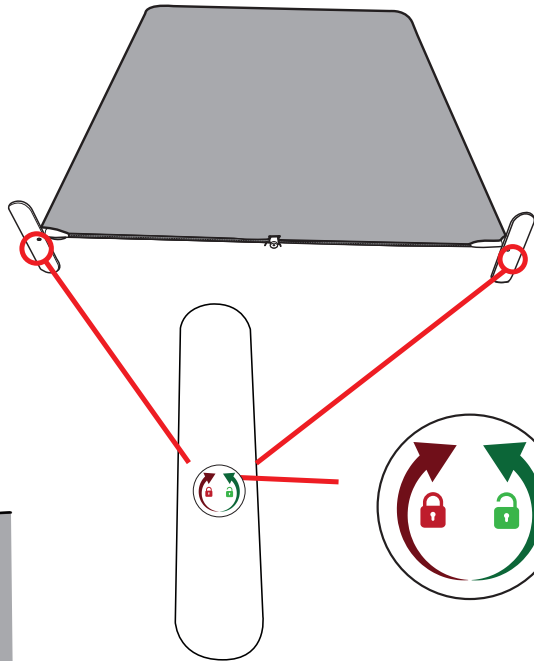
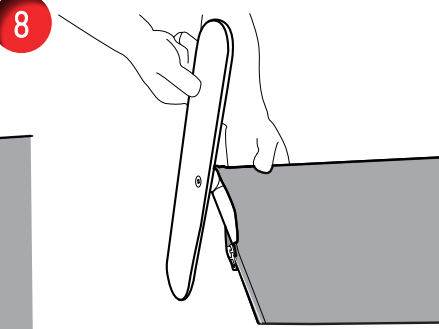
6



7



8



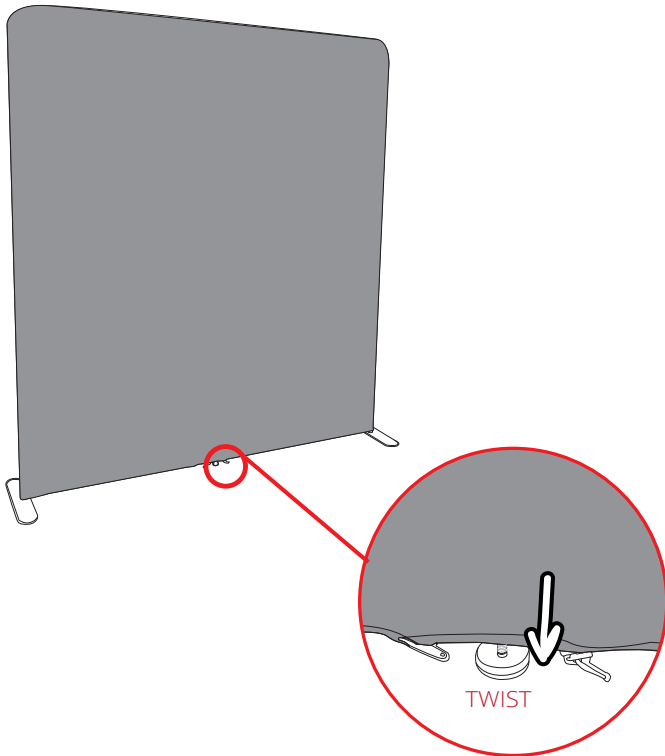
Turn clockwise to lock foot in position
Turn anti-clockwise to unlock foot

NOTE: TWO POSITIONS FOR THE FEET (SEE OPTION 1 FOR SECOND POSITION)

NOTE: Sticker on base of foot shows the directions for locking/unlocking foot



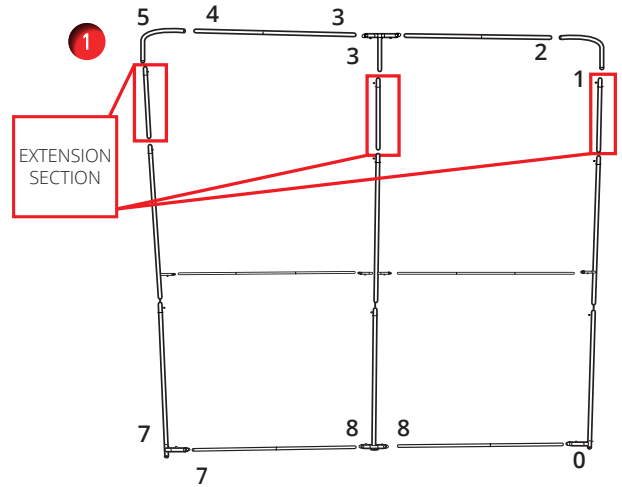
8



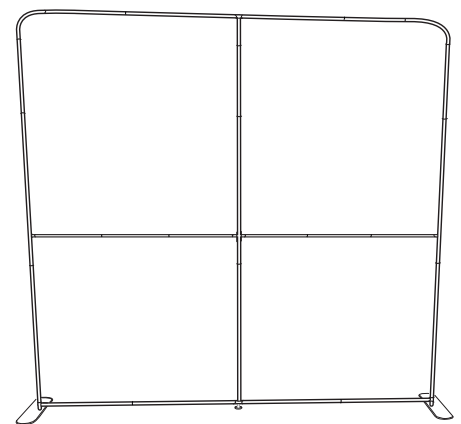
NOTE: Adjustable feet can be used to level frame

OPTIONAL (EXTENSION KIT)

NOTE: EXTENSION SECTION SUPPLIED WITH 3824 FRAME



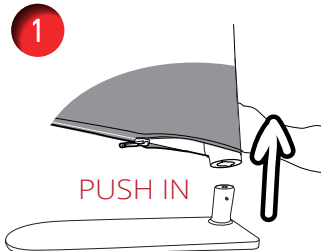
2



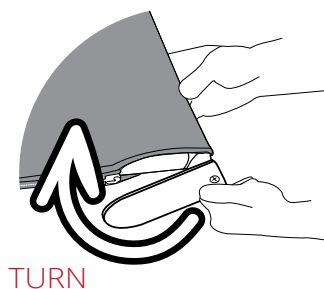
OPTIONAL (HALF FEET)

OPTION 1 NOTE: HALF FEET CAN BE POSITIONED ONTO THE FRAME TWO DIFFERENT WAYS

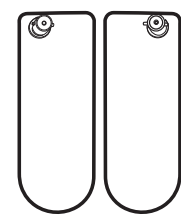
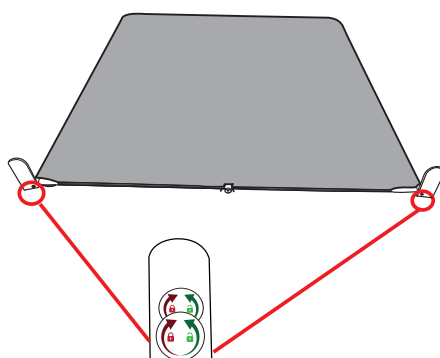
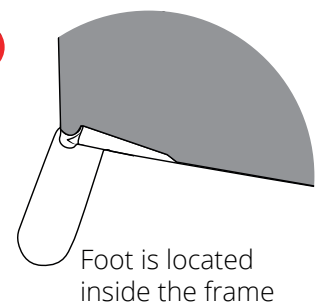
1



2



3

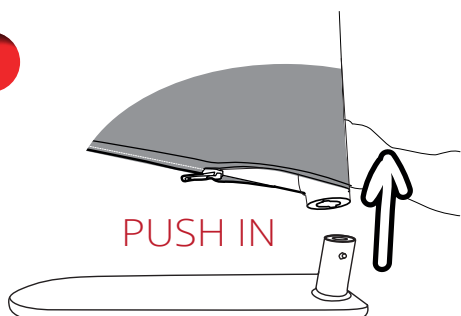


Turn clockwise to lock foot in position
Turn anti-clockwise to unlock foot



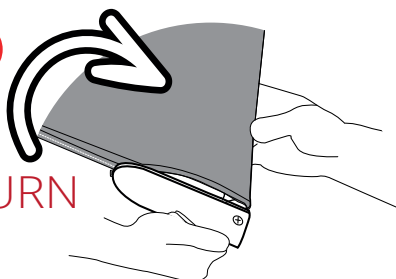
OPTION 2

1



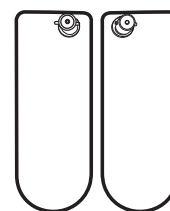
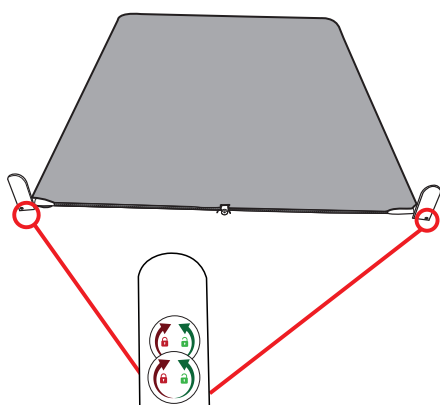
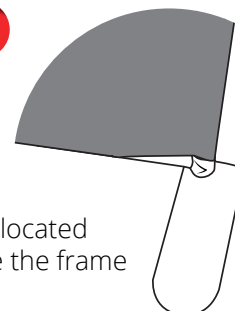
2

TURN



3

Foot is located outside the frame

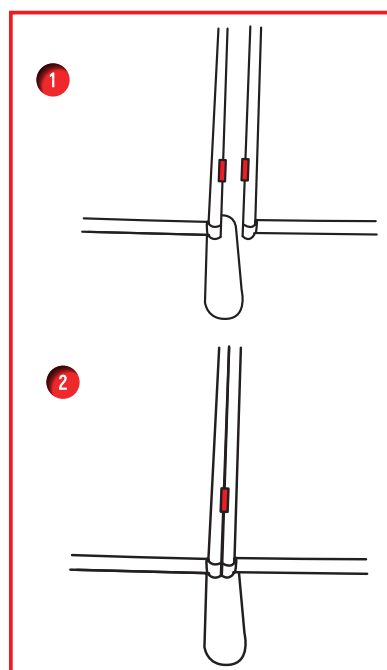
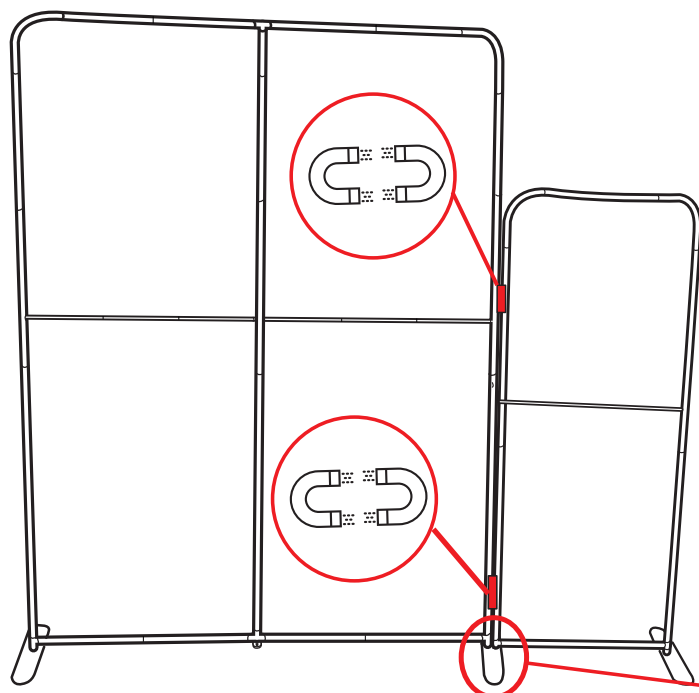


Turn clockwise to lock foot in position
Turn anti-clockwise to unlock foot



CONNECTING MULTIPLE FRAMES

NOTE: SECOND FRAME (820 STRAIGHT NOT INCLUDED)



Remove one foot from second frame and align both frames on one foot

NOTE: FOLLOW OPTION 1 FOR HALF FEET TO CONNECT TWO FRAMES ON ONE FOOT

3024 (With Extension) Straight Frame and 820 Straight Frame