

PARTS (NOT TO SCALE)

2020 Straight

Vertical Poles

Vertical Centre Poles

Horizontal Support Poles

Bottom Horizontal Poles

Top Horizontal Poles

Vertical Centre Pole

Radius Top Corner Sections

Feet

Gloves

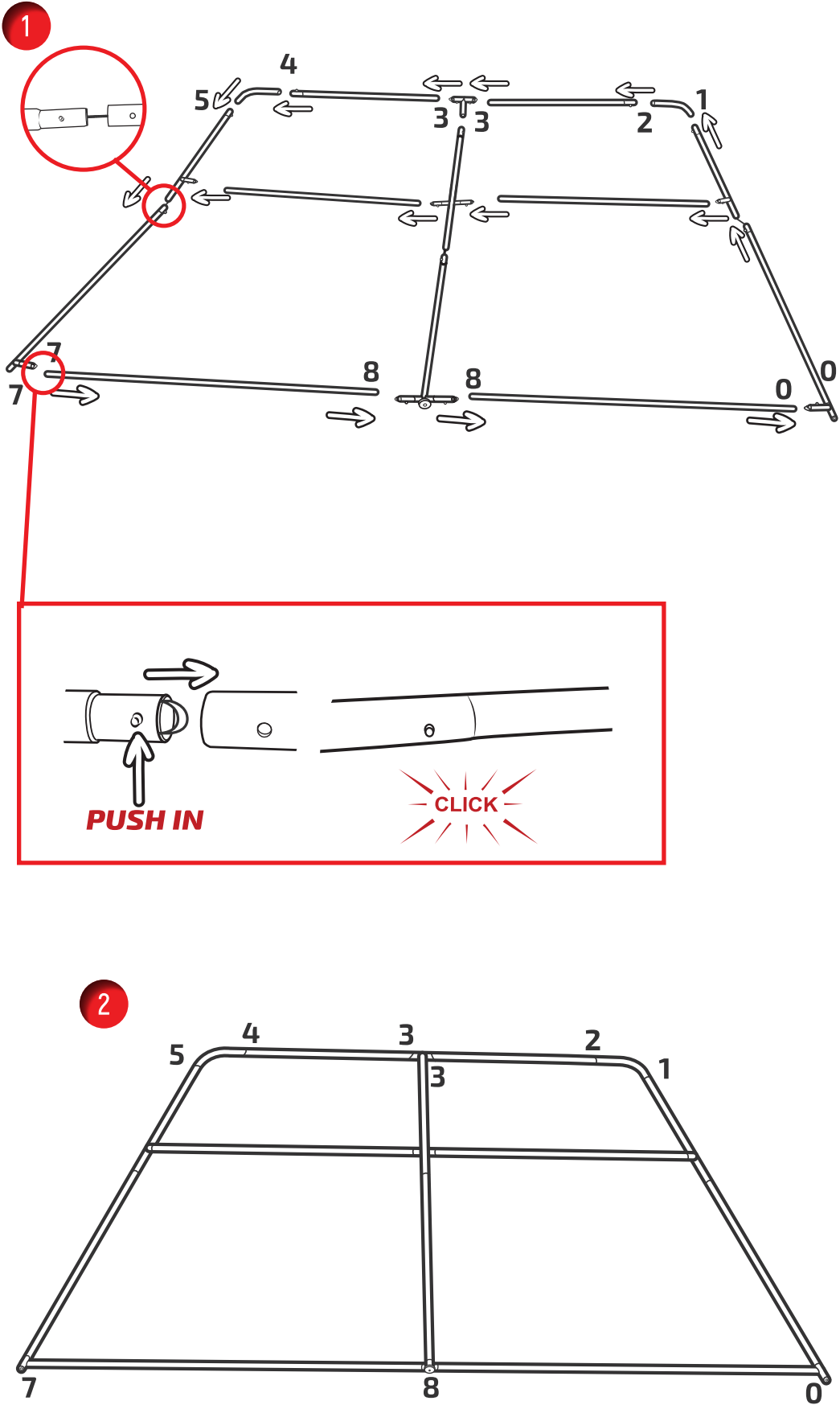
Optional Half Feet

NOT SUPPLIED WITH KIT AND THEY ARE SOLD SEPARATELY

2024 Straight

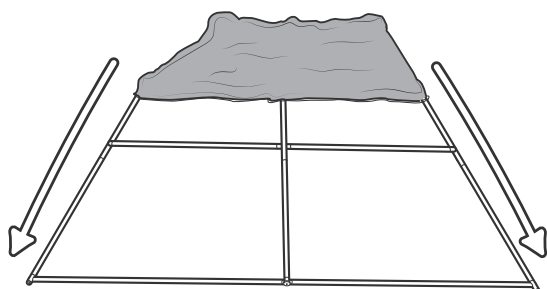
Optional Extension poles (x3)

NOTE: The extension poles are used for 2024 Curved frames

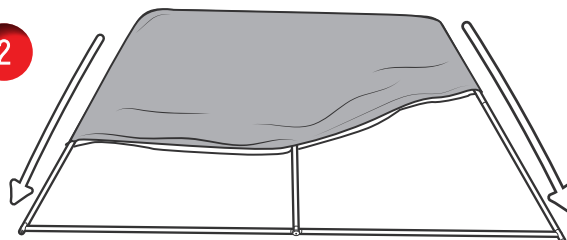




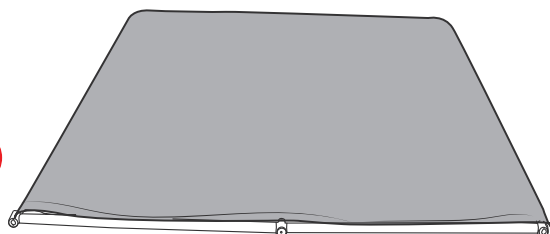
1



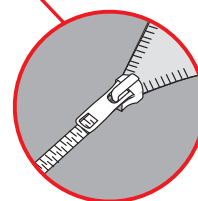
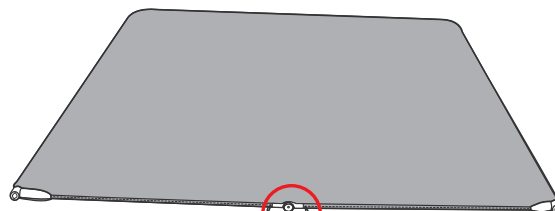
2



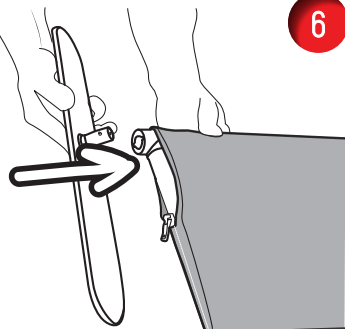
3



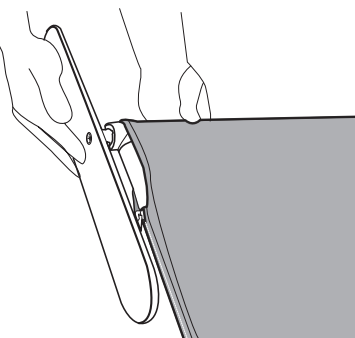
4



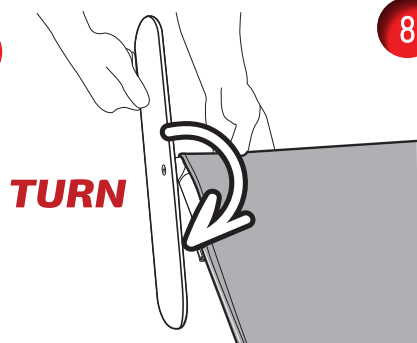
5



6

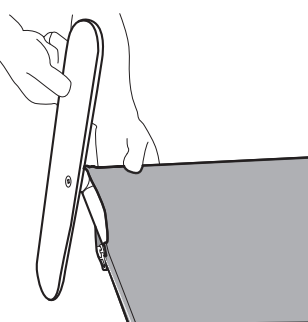


7

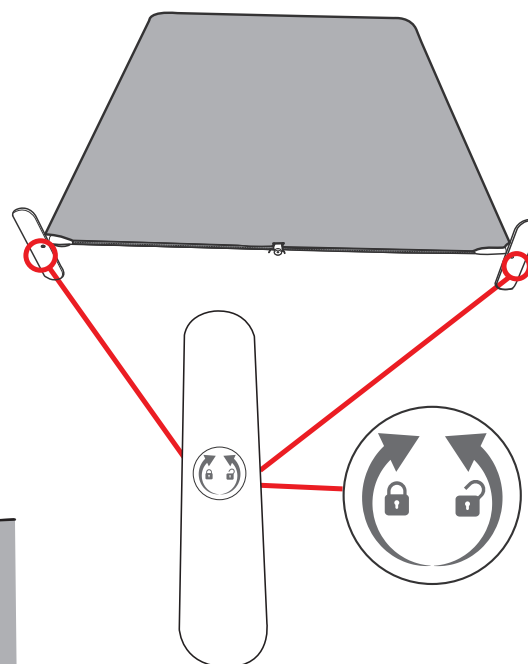


TURN

8

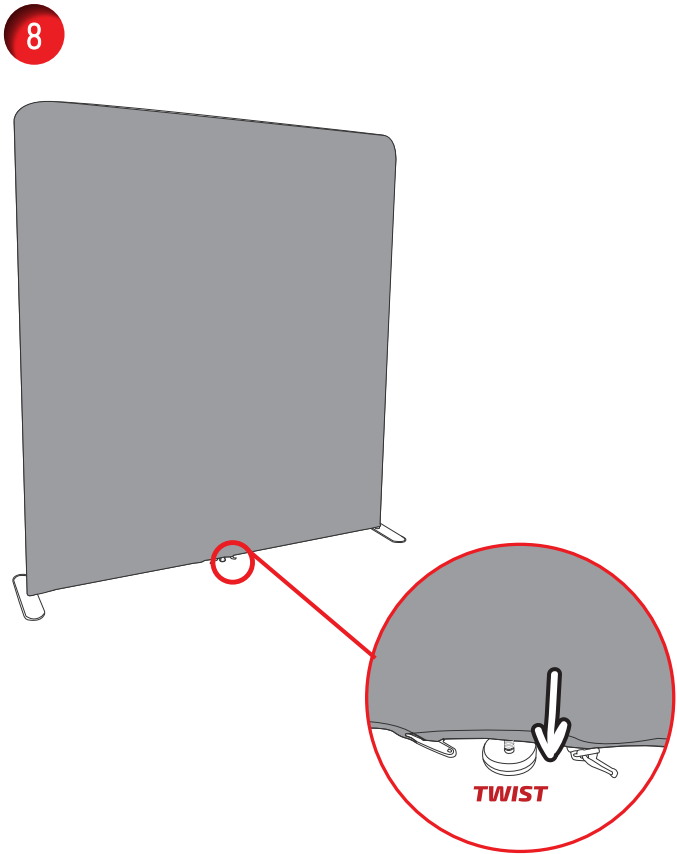


Turn clockwise to lock foot in position
Turn anti-clockwise to unlock foot



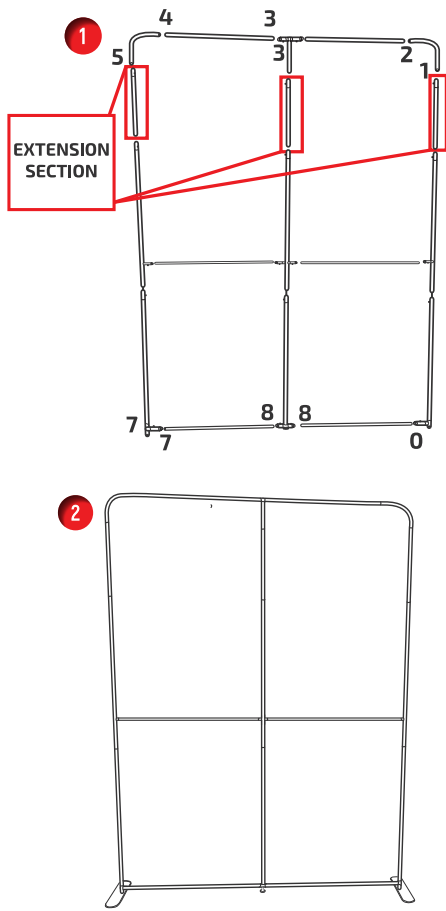
NOTE: Sticker on base of foot shows the directions for locking/unlocking foot

NOTE: TWO POSITIONS FOR THE FEET (SEE OPTION 1 FOR SECOND POSITION)



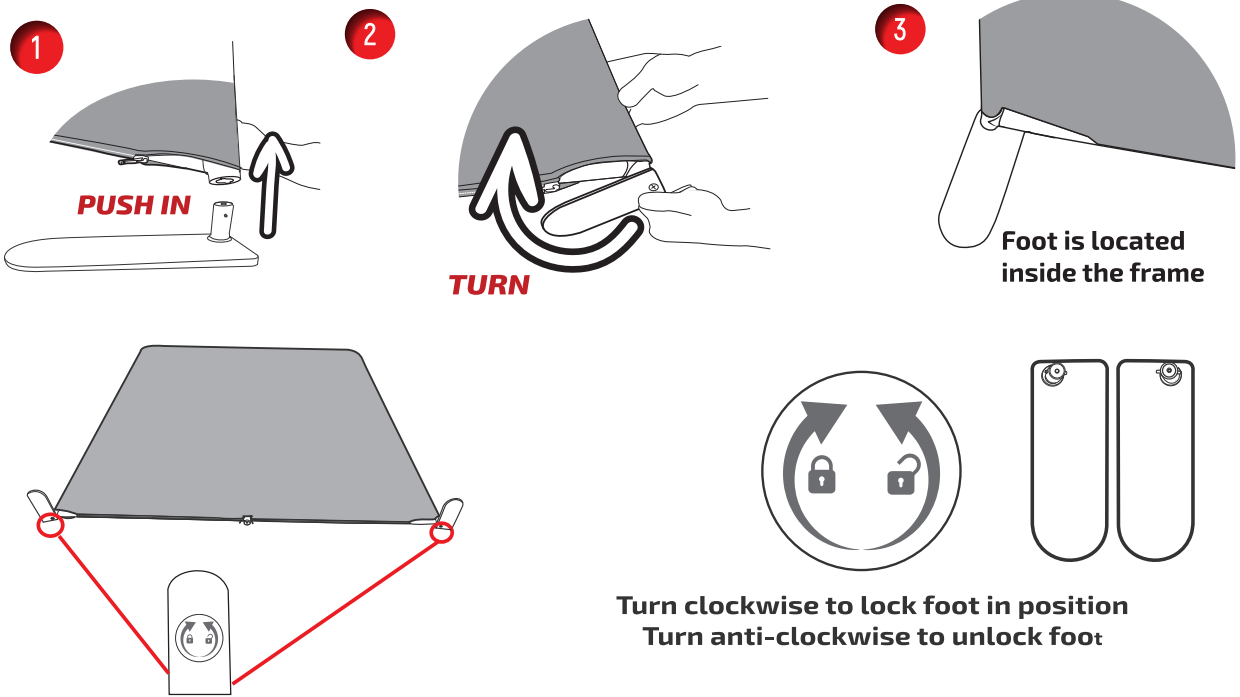
NOTE: Adjustable feet can be used to level frame

OPTIONAL (EXTENSION KIT)
NOTE: EXTENSION SECTION SUPPLIED WITH 2024 FRAME



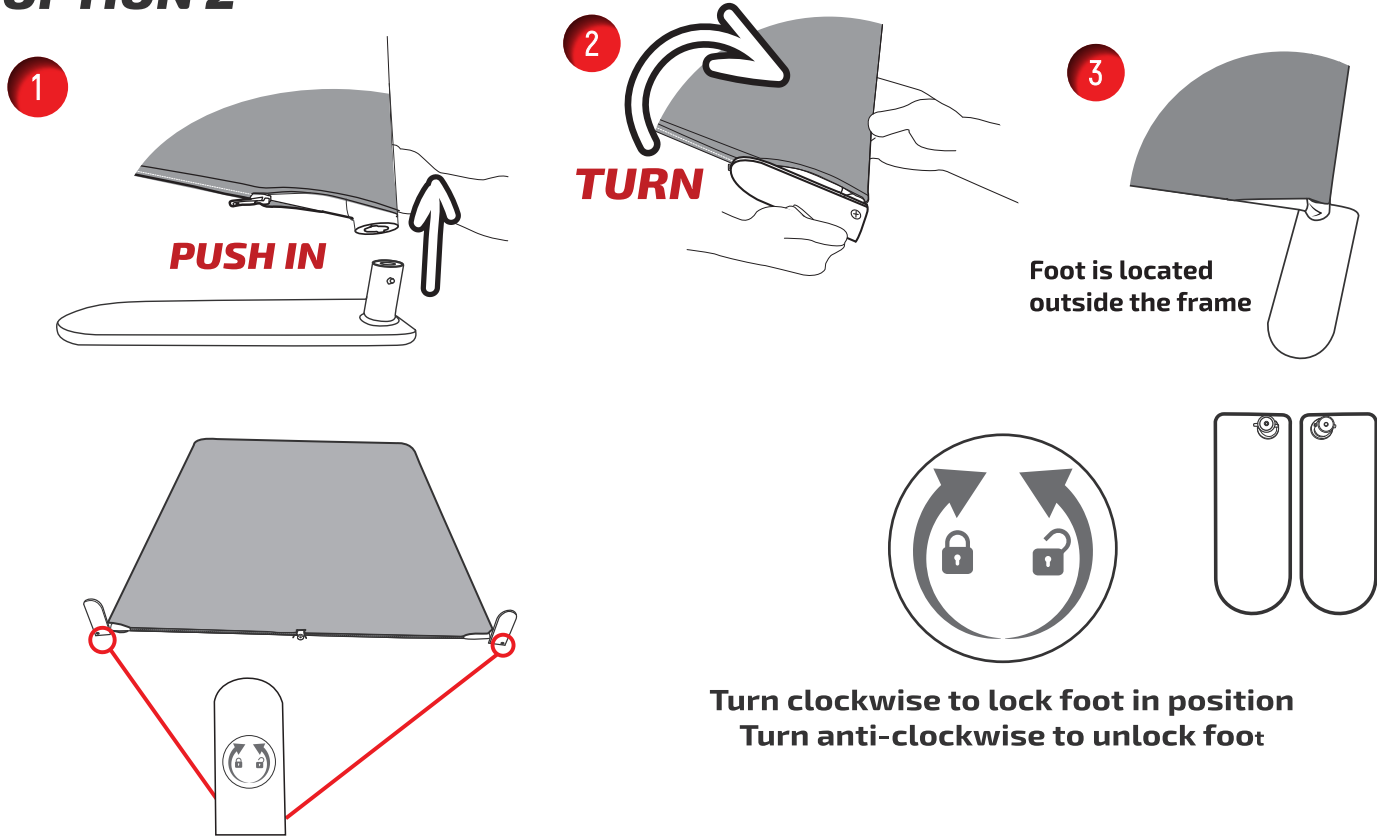
OPTIONAL (HALF FEET)

OPTION 1 **NOTE: HALF FEET CAN BE POSITIONED ONTO THE FRAME TWO DIFFERENT WAYS**

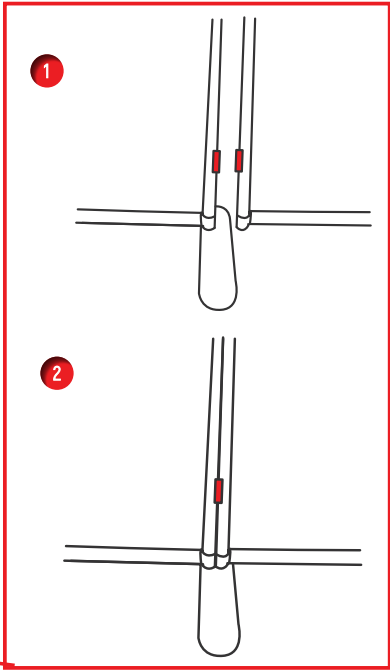
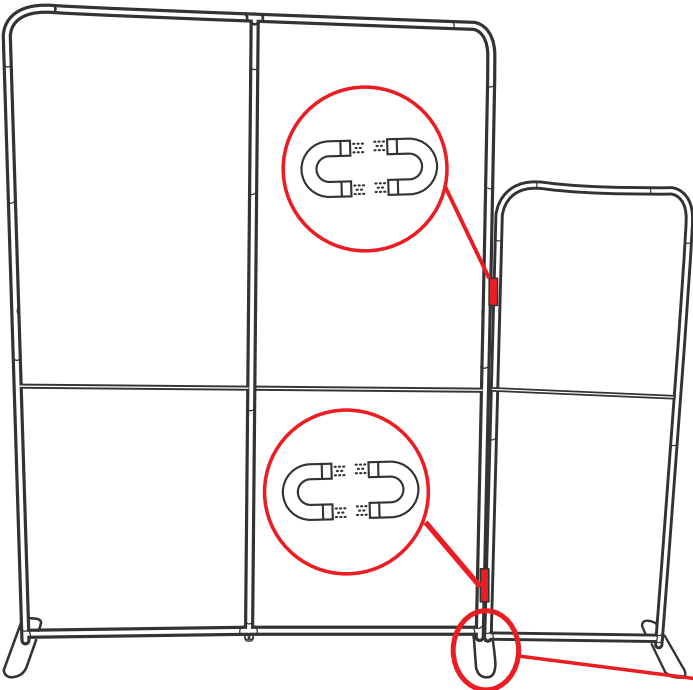




OPTION 2



CONNECTING MULTIPLE FRAMES
NOTE: SECOND FRAME (820 STRAIGHT NOT INCLUDED)



Remove one foot from second frame and align both frames on one foot

NOTE: FOLLOW OPTION 2 FOR HALF FEET TO CONNECT TWO FRAMES ON ONE FOOT

2024 (With Extension) Straight Frame and 820 Straight Frame