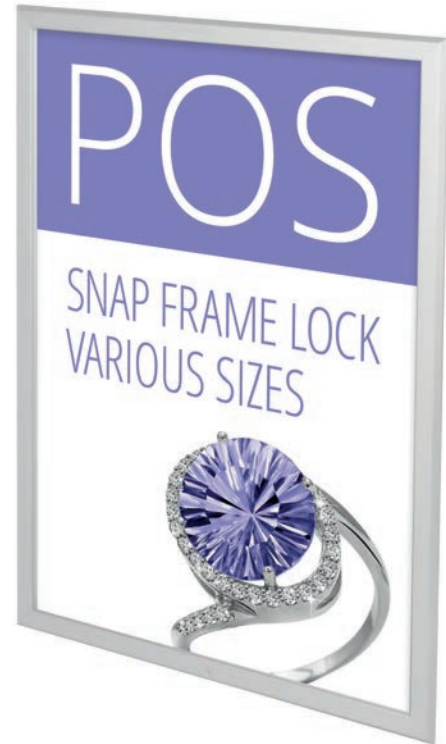


# POS Lockable Snap Frame

Assembly Instructions



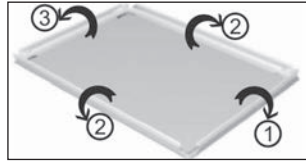


## POS Lockable Snap Frame - contents

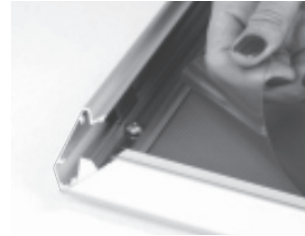
- Snap Frame 1
- Wall Fixing 1
- Hex Key 1



Unlock the framework using the hex key provided



Open the snap frame profile to access the PVC protective cover



Remove the PVC cover



Insert your poster, replace the PVC protective cover on top and close the snap frame profile



Finally lock the screw on top-side profile using the hex key