

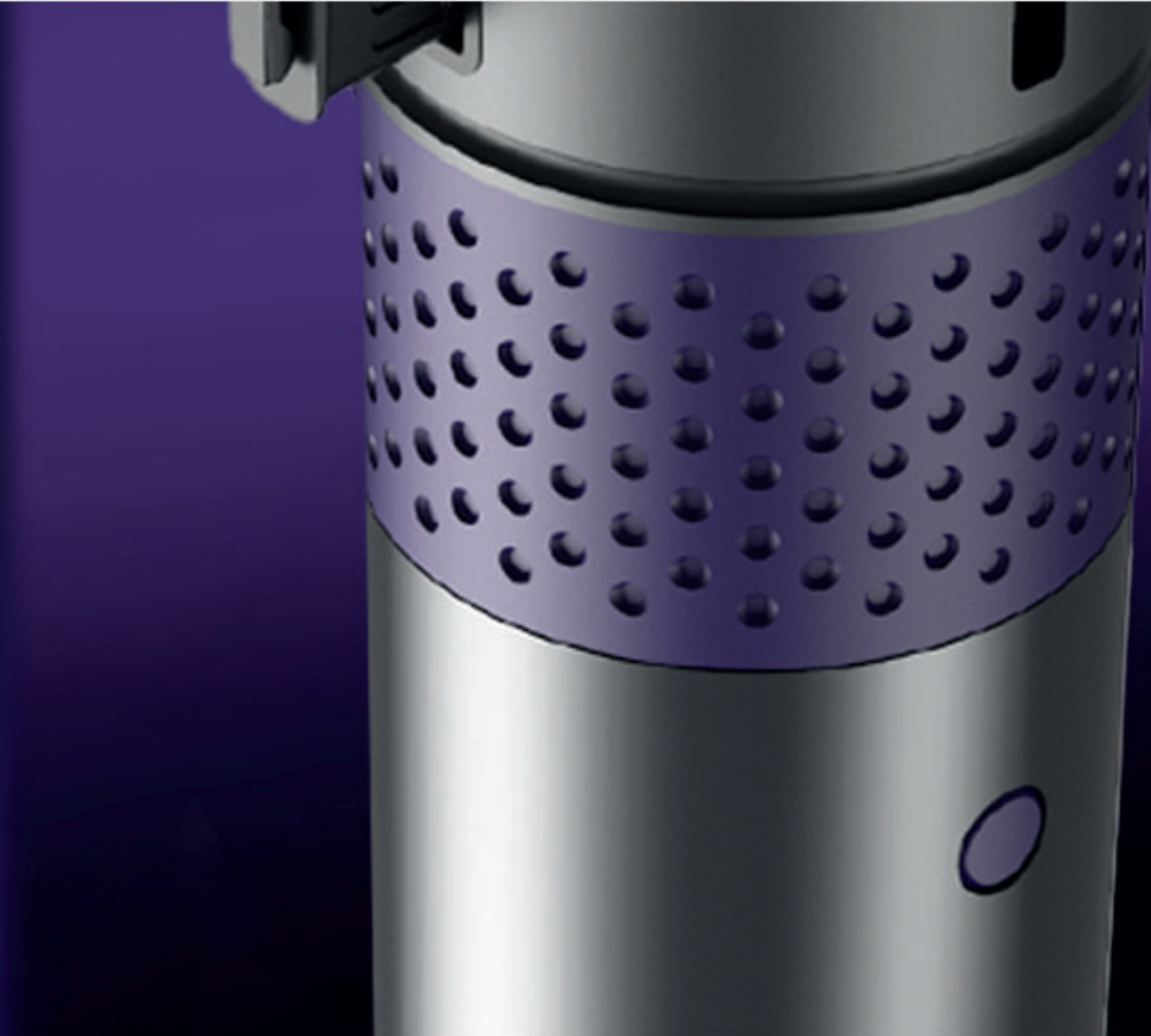


A Q system has never looked so good.

### A unique new barrier system that stands out from the crowd.

The current global offering for retractable barrier systems has not changed for decades. That's why we have developed this new cutting edge queue management and safety system for the 21st century.

It's time to let your customers stand out from the crowd, so from March 2021, we will be launching this fantastic range, bringing this great opportunity to kick-start the year.



### Design matters.

The new Q has been re-engineered from the ground up, with beautiful design and utilizing the finest materials, it allows versatility not seen before in the retail / business environment.

### Discover unlimited possibilities with our customisable options.

With the importance of brand consistency for some customers, the highly versatile Skipper Q has the ability to offer the most comprehensive solution on the market.

The Q system has so many modular options available it can be tailored to create colour combinations that really brings the barrier system to life.



Includes 3 metres of coloured webbing.



### The ultimate system for waste & safety management.

Skipper Q can be transformed into the ideal waste and safety management solution by attaching our versatile modular attachments.

As with all Skipper products, the multi-surface, multi-functional design the ability to easily add Waste Bins, Dispensers for essential PPE, Sanitiser Brackets and much more to create any ideal combination.

