

Artwork requirements

- Please save artwork as CMYK.
- Please set up ALL artwork at **100%** scale on template provided.
- With artwork set up at, please supply ALL artwork with a minimum of 25mm bleed to all outer edges.
- If fonts are used, please outline ALL fonts, where not possible please supply all fonts used.
- Once artwork is received, we will set up on our template and send you a PDF proof for positioning and spelling purposes, please check carefully
- If colour matching is required then please advise.
- We do not print PANTONE, we can print the CMYK equivalent, if you have a preferred CMYK equivalent then please advise.
- Artwork can be supplied by either email, CD/DVD or uploaded to our website www.zoomdisplay.co.uk, select Artwork then select Upload Artwork and follow instructions.



Illustrator

- Set up CMYK on template provided
- OUTLINE ALL FONTS
- Turn off all Overprints, supply all Links and flatten Transparency
- If supplying a High Res PDF do not compress and supply with all bleed and crop marks



InDesign

- Set up CMYK on template provided
- OUTLINE ALL FONTS
- Please save and supply a High Res PDF do not compress and supply with all bleed and crop marks



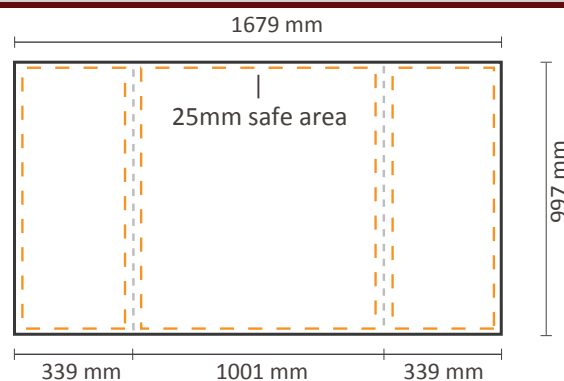
Photoshop

- Set up CMYK on template provided at a print resolution of 80dpi
- Supply a low resolution PDF for visual purposes
- If artwork set up in Photoshop, text/logos will not be vectored and will have some pixelation when printed full size,
- Save out as a JPEG.



Adobe Acrobat

- If supplying a PDF as your final artwork, ensure all images are not reduced or compressed, crop marks and bleed are included and visual lines are not included inside the artwork.



Counter Impress

Counter Panel Size is:

Total Panel Size: 1679mm (w) x 997mm (h)

Front Visual Area: 1001mm (w) x 997mm (h)

Side Visual Area: 339mm (w) x 997mm (h)

Please allow 25mm safe area for all text/logos