

# Centro 3

Assembly Instructions  
(no spacer bars)



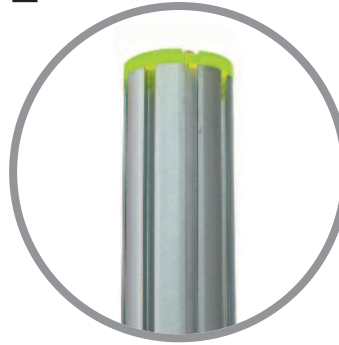
1



Stand base on the ground.  
Loosen grub screws and slide both connector bars half way out of groove and retighten.  
Repeat for other base posts.  
**Note:** Base plates pre-assembled on kits supplied in carry bag only.

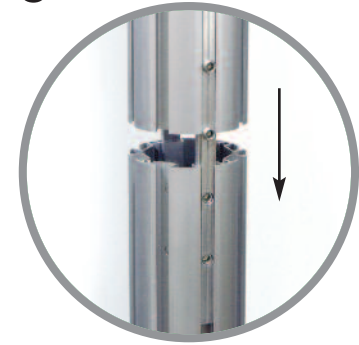


2



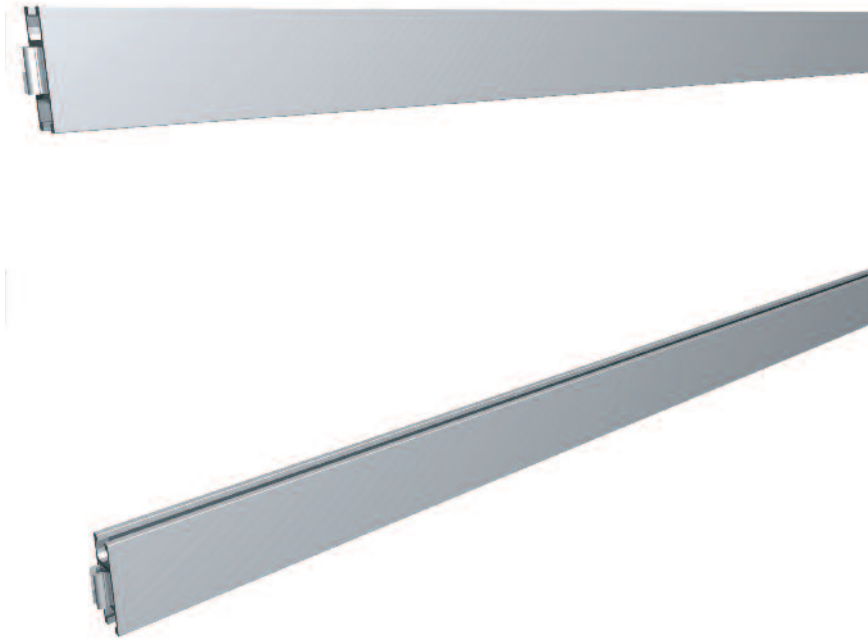
The upper 8-way post end cap has two notches which should align with the connector bar grooves shown in stage 3.

3

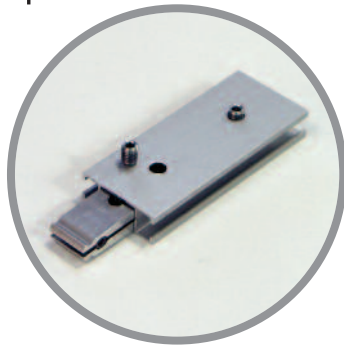


Join posts and tighten the grub screws to make assembly secure.  
Repeat for other base posts.



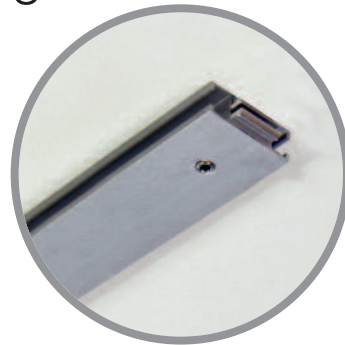


4



Remove four internal clamps from the spacer bars by removing grub screw and sliding out.

5



Insert internal clamps into both ends of the 750mm horizontal rails and secure by inserting grub screw and tightening (not fully).

6



Connect first horizontal rails at the bottom of posts, leaving a 10mm gap between underside of rail and surface of base plate. Tighten clamp screws to secure in place.



7



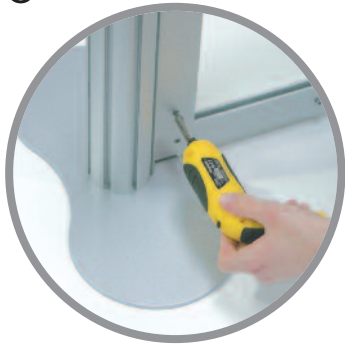
The side straight 950mm graphic rails should now be assembled. Note position of graphic fixing strips, which should align.

9



Slot second horizontal rails onto all vertical rails and fit clamps into 8-way post. Tighten clamp screws to secure assembly.

8



Connect assembled vertical rails to the bottom horizontal rail. Single strip line should be on the edge closest to the post when viewed from the front.

10



Affix graphic panels to the graphic fixing strips, starting from the top and side, working across the completed system.