

Centro 2 Straight and Curved (no spacer bars)

Assembly Instructions



1

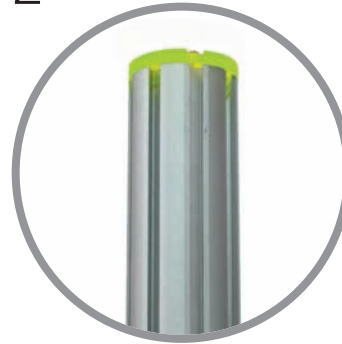


Stand base on the ground. Loosen grub screws and slide both connector bars half way out of groove and retighten. Repeat for other base post.

Note: Base plates pre-assembled on kits supplied in carry bag only.



2



The upper 8-way post end cap has two notches which should align with the connector bar grooves shown in stage 3.



3



Join posts and tighten the grub screws to make assembly secure. Repeat for other base post.



4



The graphic rails are joined in the same manner as the posts, by loosening connector bars, sliding in between rails and retightening. Ensure graphic fitting strips are aligned.



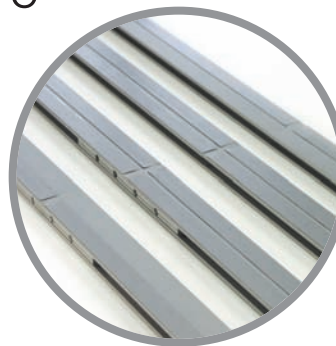
5



The adjustable feet should be screwed into the horizontal 750mm rails used at the bottom of the system. Note position of graphic fitting strip.



6



The side and middle* straight vertical 950mm graphic rails should now be assembled. Note position of graphic fitting strips.



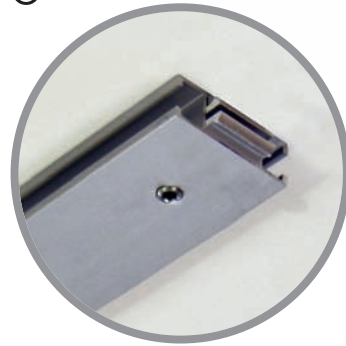
* depending on version supplied

7



Remove four internal clamps from the spacer bars by removing grub screw and sliding out.

8



Insert internal clamps into both ends of the horizontal rails and secure by inserting grub screw and tightening (not fully).



9



Connect the bottom horizontal rail to the two posts and tighten grub screws as before. Leave top rail until all verticals are in place. They will balance.



10



Connect side vertical rails to the bottom horizontal rail. The side vertical rails have one run of tape on them. Strip should be nearest the post when viewed from the front.



11



Connect middle rail(s)* to the bottom rail and tighten grub screws. The middle rails have a double graphic fitting strip on them. They will balance.



12

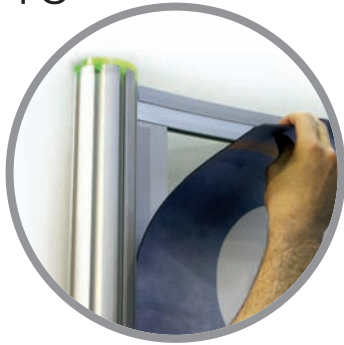


Slot top horizontal rail onto all vertical rails and tighten grub screws.



* depending on version supplied

13



Affix graphics to the fitting strip starting from the top and side, working across the completed system.

